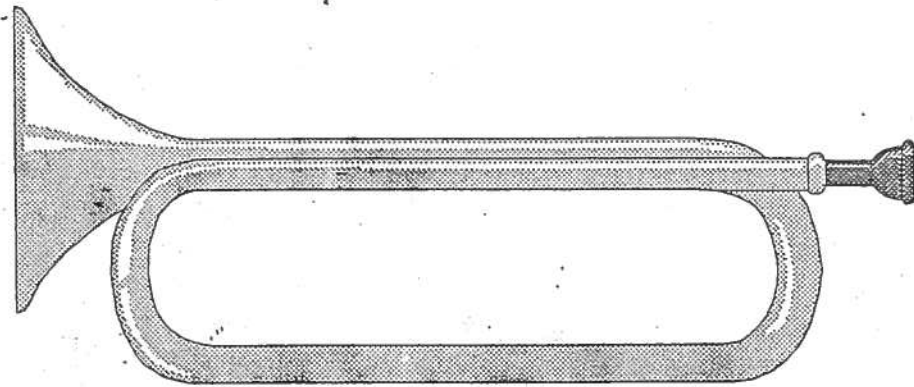


**PACIFIC REGION**

**BUGLE CALL**

**BOOK**



# BUGLE CALLS

## 1. ACTION



Preceded and followed by one "G" - "Exercise Action."  
Followed by two "G's" - "Night Action."  
Preceded and followed by two "G's" - "Exercise Night Action"

## 2. ALARM TO ARMS



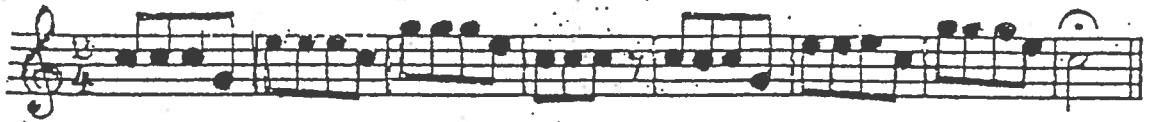
Also used for "Repel Aircraft."

## 3. CRUISING STATIONS



With one or more "G's" to indicate watch required.

## 4. FLYING STATIONS



## 5. FLEET AIR ARM FALL IN



## 6. FLIGHT-DECK DIVISION FALL IN

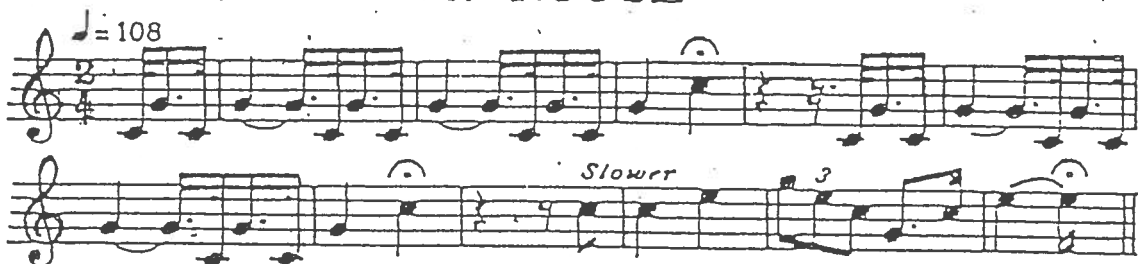


## 7. REVEILLE



Used for calling the HANDS.  
Follows Last Post at Naval Funerals

## 8. ROUSE



Used for "Guard and Steerage"

## 9. SUNSET



Complete call not used when under way  
First part, up to \*, used for "Control parties" as follows:—

- Followed by one "G"— "Main Armament"
- Followed by two "G's"— "Secondary Armament"
- Followed by three "G's"— "A.A. Armament"
- Preceded by one "G"— "Searchlight"
- Preceded by two "G's"— "Torpedo"

# 10. FIRST POST

*d* = 76

The musical score for '10. FIRST POST' consists of five staves of music. The first staff begins with a treble clef, a common time signature (C), and a tempo marking of *d* = 76. The music is written in a single melodic line. The first four staves contain continuous eighth-note patterns. The fifth staff features a different rhythmic pattern with some notes marked with a fermata and includes double-angle brackets (<>) under certain notes.

Not used when under way

# 11. LAST POST

*d* = 76

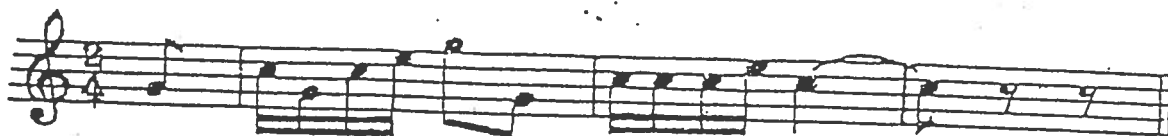
The musical score for '11. LAST POST' consists of five staves of music. The first staff begins with a treble clef, a common time signature (C), and a tempo marking of *d* = 76. The music is written in a single melodic line. The first two staves contain continuous eighth-note patterns. The third and fourth staves continue with similar rhythmic patterns. The fifth staff features a different rhythmic pattern with some notes marked with a fermata and includes double-angle brackets (<>) under certain notes.

At sea, used only for burial

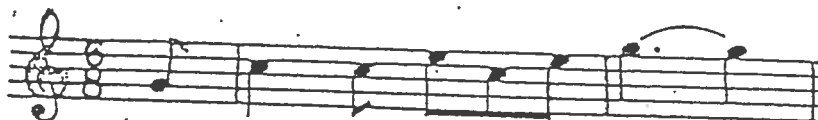
# 12. GUARD

The musical score for '12. GUARD' consists of a single staff of music. It begins with a treble clef and a common time signature (C). The music is written in a single melodic line.

### 13. BAND

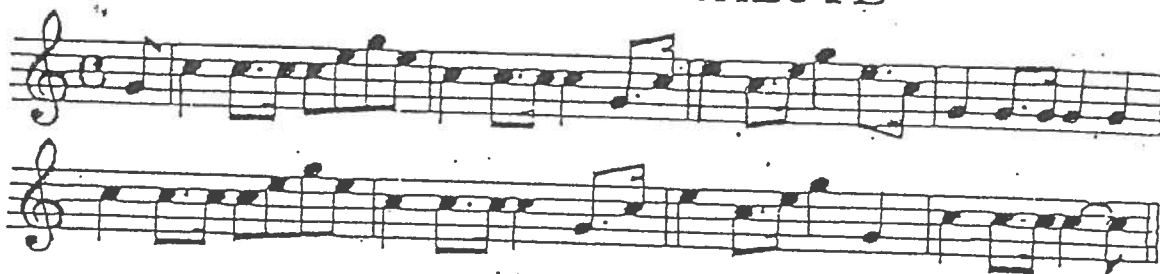


### 14. ALERT



Precedes all salutes.

### 15. GENERAL SALUTE

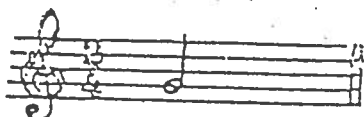


### 16. DIVISIONS



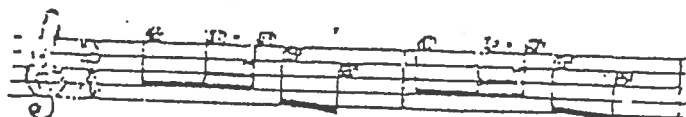
Used for "Hands fall in by Divisions" at any time.

### 17. ONE "G"



Used as an 'executive' e.g. for "Our lower Boom," etc., as a warning of approach of "Rounds," and also within a few minutes of "Watches for Exercise," "Divisions," "Evening Quarters," etc.

### 18. SALUTING GUNS' CREWS



## 19. CLEAR LOWER DECK.



## 20. WATCHES FOR EXERCISE



Followed by one or more "G's" to indicate watch required.  
 Preceded by one or more "G's" to indicate the part of the watch required.

## 21. WATCH OF THE HANDS



Followed by one or more "G's" to indicate the watch required.

## 22. DUTY HANDS



Followed by "G's" to indicate first or second duty hands.

## 23. CABLE PARTY



## 24. SPECIAL DUTY MEN

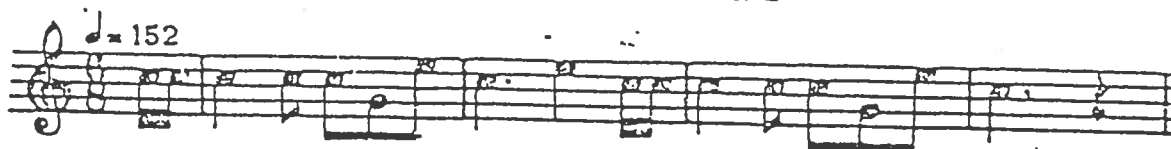


Followed by one or more "G's" to indicate watch required.

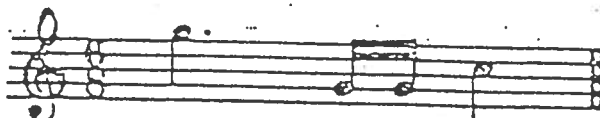
## 25. CLOSE WATERTIGHT DOORS



## 26. LOOKOUTS



## 26a. EXTRA LOOKOUTS

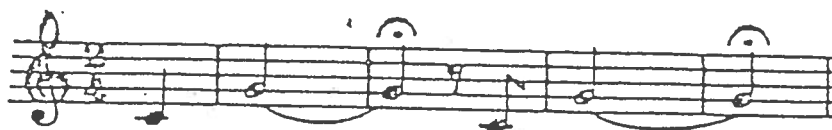


To follow "LOOKOUTS" when "Fog" or "Night" lookouts are required.

## 27. EMERGENCY PARTY



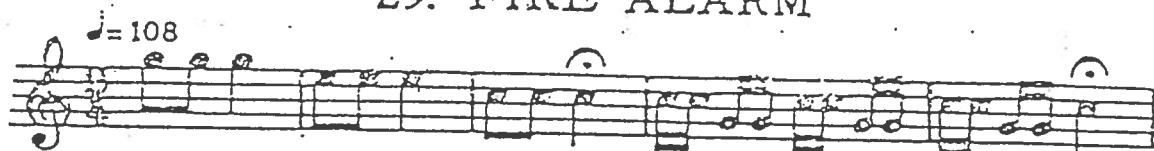
## 28. DARKEN SHIP



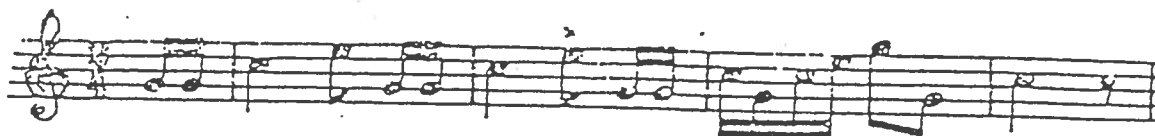
Followed by "Halt," - "Undarken Ship."

*quant. suff.*

## 29. FIRE ALARM



## 30. CLEAN GUNS



Followed by one "G" - "Clean Arms:"

One long "G" at "CLEAN GUNS" - "Return Rags:"

One long "G" at "CLEAN ARMS" - "On Belts:"

First part only to ♫ - "Cover Guns:"

First part to ♫, followed by one "G" - "Uncover Guns:"

31. SECURE



Followed by one "G" - "Return Arms"

32. DISPERSE



33. OFFICERS

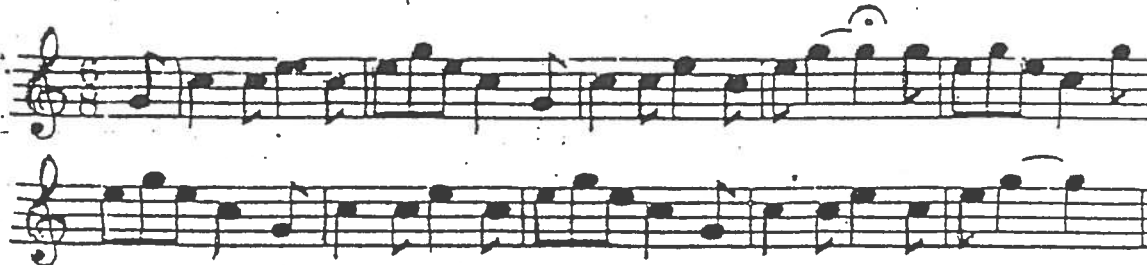


Followed by one "G" - "Officers Warned!"  
Followed by two "G's" - "Cable Officers!"  
Followed by three "G's" - "Executive Officers!"  
Followed by four "G's" - "All Officers!"

34. OFFICERS DRESS FOR DINNER



35. OFFICERS' DINNER



36. COOKS





### 37. GROG

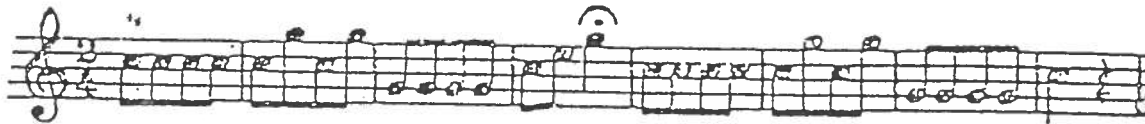


Followed by one "G" - "Lima juice!"

### 38. MAIL



### 39. LANDING PARTY



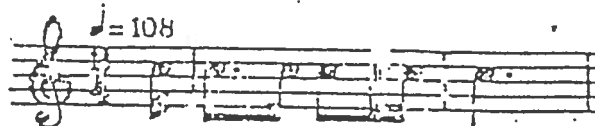
This applies to seamen landing parties only, to "Fall In."  
Followed by one "G" - "A company" or "1st organisation!"  
Followed by two "G's" - "B company" or "2nd organisation!"  
Followed by three "G's" - "C company" or "3rd organisation!"

### 40. MARKERS

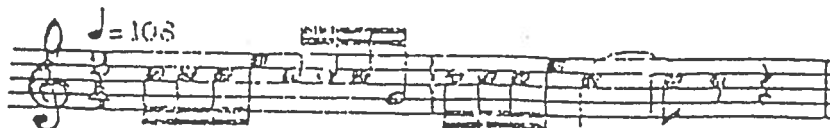


Followed by one "G" - "Right markers!"  
Followed by two "G's" - "Left markers!"  
Also used for "Recording parties!"

### 41. QUICK MARCH



### 42. DOUBLE

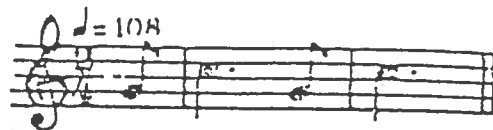


### 43. MARCH AT EASE



Also used for "Stand Easy"

### 44. HALT



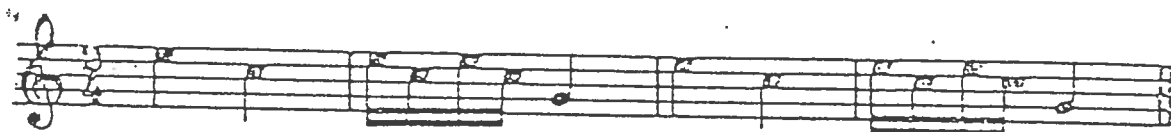
Also used to annul the immediately preceding call or pipe.

### 45. ATTENTION



Followed by one "G"—"Gas Alarm!"

### 46. EXTEND



Used at any time to extend men, such as in "Man Ship"  
Also to indicate "Lull in Action," "Collect Wounded," etc.

### 47. CLOSE



Used to close men at any time, such as "Man Ship!"

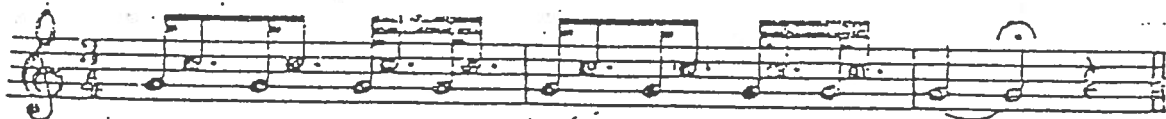
At Divisions— "Everybody Aft!"

Followed by one "G"— "Close to Starboard!"

Followed by two "G's"— "Close to Port!"

Also used to indicate "Action about to commence!"

### 48. INCLINE

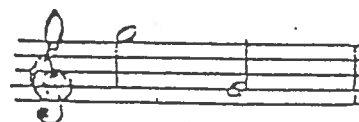


Also used for "Paravane party!"

### 49. LIE DOWN



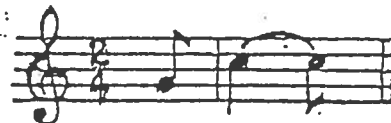
### 50. RISE UP



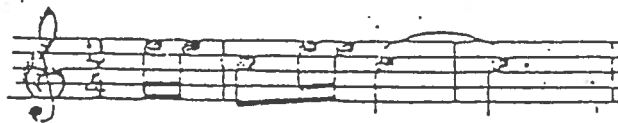
51. STILL



52. CARRY ON



53. ADVANCE



Used also for "Bothers to enter the water"  
and "Stations for anchoring."

54. RETIRE



Used also for "Bothers to leave the water"  
and "Light guns crews take cover."

55. COMMENCE

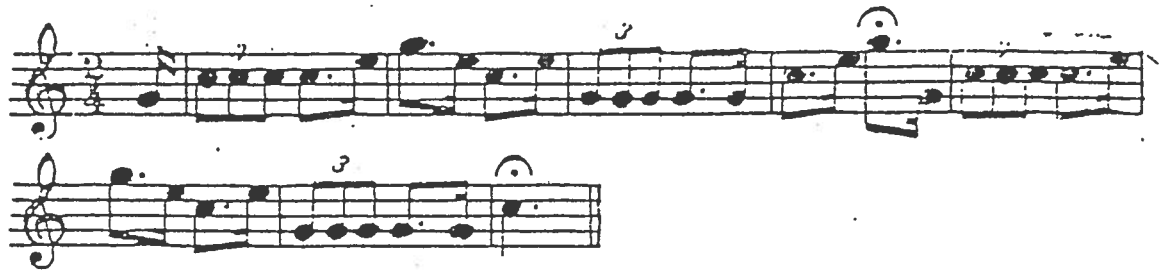


56. CEASE FIRING



Used also for "Out pipes"  
and "Stop pumps"

57. LIBERTY MEN



58. DRUMMERS OR BUGLERS



59. DEFAULTERS



Followed by one "G" - "Captain's Defaulters!"  
Followed by two "G's" - "Commander's Defaulters!"