

SECTION 3

MUSIC PROFICIENCY LEVEL FIVE–THEORY ASSESSMENT VERSION C

Cadet's Name: _____ Corps/Sqn: _____

Instrument: _____ Score: _____ / 39

1. Name the following notes of the C Clef. (6)



2. Identify the following compound intervals. (6)



3. Write the following chords in the specified inversion. (6)



Gbmaj(2nd)

BbAug(root)

C#V7(1st)

4. Write the following chords in the specified inversion. The given note is the bass note of the chord. (6)



V7(2nd)

min(root)

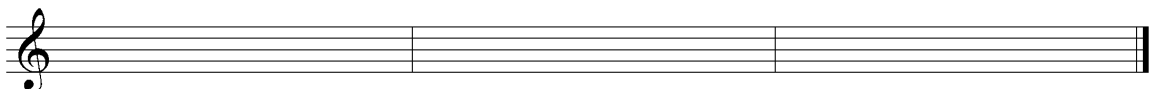
maj(1st)

5. Transcribe the following instrumental part to the new instrument. (5)

C Flute



Bb Clarinet



6. Identify the following cadences. (2)

The musical notation shows a closed score with two staves. The first two measures are in E minor (one flat) and contain chords: E4-G4-B4 (first measure) and E4-G4-B4 (second measure). The second two measures are in Bb major (two flats) and contain chords: Bb4-D5-F5 (first measure) and Bb4-D5-F5 (second measure). There are horizontal lines below the first and second measures for identification.

7. Write the following cadences. (4)

The musical notation shows two empty staves. The first staff is labeled 'E minor' and has a key signature of one sharp (F#). The second staff is labeled 'Bb major' and has a key signature of two flats (Bb, Eb). Below the first staff is the label 'Deceptive Cadence' and below the second staff is the label 'Half Cadence'.

8. Expand the following piano part from closed score to open score. (4)

The musical notation shows a piano part in E minor (one sharp) with a common time signature. The piano part consists of four measures. The first measure has a half note E4 in the bass and a half note G4 in the treble. The second measure has a half note E4 in the bass and a half note G4 in the treble. The third measure has a half note E4 in the bass and a half note G4 in the treble. The fourth measure has a half note E4 in the bass and a half note G4 in the treble. There is a triplet of eighth notes in the bass line of the second measure. Below the piano part are four empty staves for expansion: two treble clefs and two bass clefs.