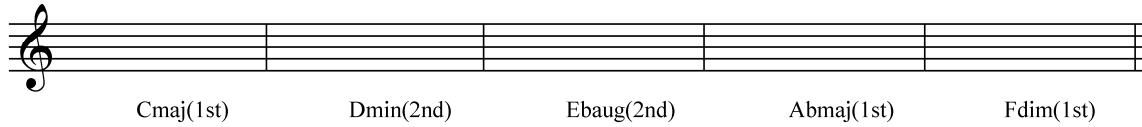


6. Write the following chords in the stated inversion. (5)

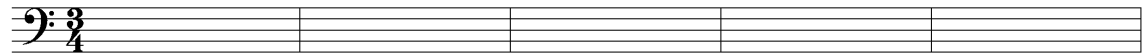
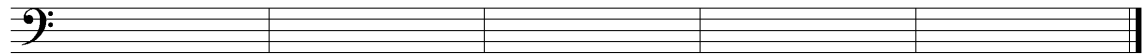


Cmaj(1st) Dmin(2nd) Ebaug(2nd) Abmaj(1st) Fdim(1st)

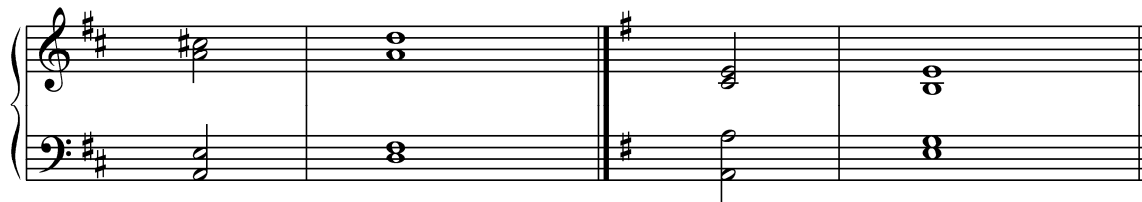
7. Transpose the following melody the given interval.



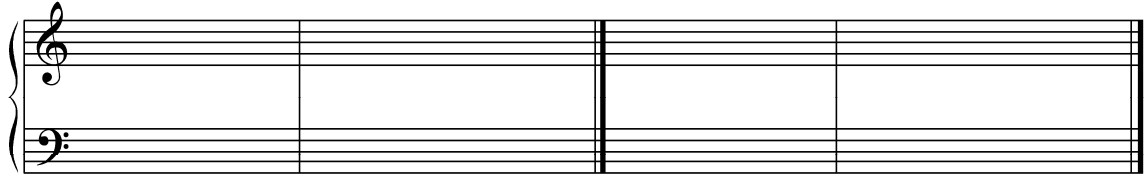
Up a major 6. (5)

8. Identify the following cadences. (2)



9. Write the following cadences. (4)



Key of F major
Plagal Cadence

Key of G major
Perfect Authentic Cadence

10. State the key of the melody. (1)



THIS PAGE INTENTIONALLY LEFT BLANK