

SECTION 3

MUSIC PROFICIENCY LEVEL ONE–THEORY ASSESSMENT VERSION C

Cadet's Name: _____

Corps/Sqn: _____

Instrument: _____

Score: _____ / 48

1. Identify each of the following as a diatonic semitone (DS), a chromatic semitone (CS), or a whole tone (WT). (10)

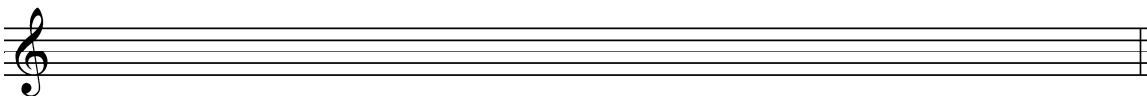


DS



DS

2. Write a one octave ascending and descending chromatic scale starting and ending on a C. (2)



3. a) Add accidentals to the following series of notes to create the F major scale. (1)
 b) Below the scale, identify the tone (T) and semitone (S) structure. (1)

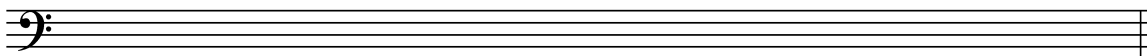


4. Write the arpeggios for the following scales; ascending and descending.

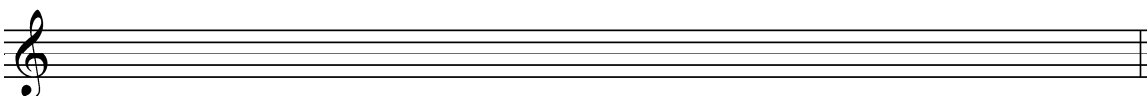
F Major (2)



D Major (2)



Bb Major (2)



5. Create a four measure rhythm in the following time signatures: (8)

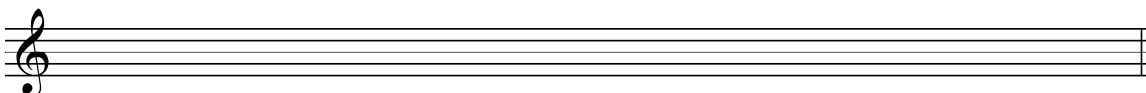
- Use both rests and note values
- Include a dotted note or rest



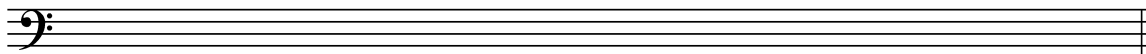
6. Write under each measure the term that has the stated definition. (3)

*accelerating
*gradually slowing down
*return to previous tempo

7. Write the seven flats, in their correct order, on the staff below. (1)



8. Write the seven sharps, in their correct order, on the staff below. (1)



9. There are three F notes on the staff below. Explain how each is affected by the key signature and accidentals. (3)

1. _____
2. _____
3. _____

10. Match the following musical terms in the left-hand column with its meaning in the right-hand column. (4)

Ritardando

Gradually slow down

Marcato

The speed of the music

Slur

A strong accent

Tempo

Joins two different notes

11. Complete the sentences by filling in the space with the appropriate music term. (3)

- a. A _____ tells us to extend the length of the note longer than usual.
- b. A note with a _____ must be held for full value.
- c. An _____ tells us to play the note with extra emphasis.

12. Write a note that is enharmonic to the following (5):

- eg, Eb = D#
1. C = _____
2. A# = _____
3. F = _____
4. Gb = _____
5. B# = _____

THIS PAGE INTENTIONALLY LEFT BLANK