

**SECTION 2**

**MUSIC PROFICIENCY LEVEL ONE–THEORY ASSESSMENT VERSION B**

Cadet's Name: \_\_\_\_\_

Corps/Sqn: \_\_\_\_\_

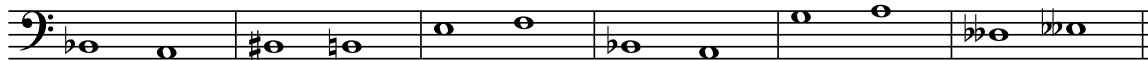
Instrument: \_\_\_\_\_

Score: \_\_\_\_\_ / 48

1. Identify each of the following as a diatonic semitone (DS), a chromatic semitone (CS), or a whole tone (WT). (10)

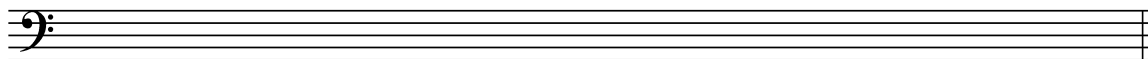


DS



DS

2. Write a one octave ascending and descending chromatic scale starting and ending on a Bb. (2)



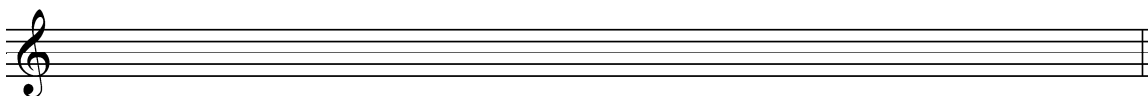
3. a) Add accidentals to the following series of notes to create the G major scale. (1)  
 b) Below the scale, identify the tone (T) and semitone (S) structure. (1)



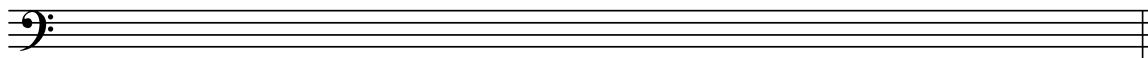
\_\_\_\_\_

4. Write the arpeggios for the following scales; ascending and descending.

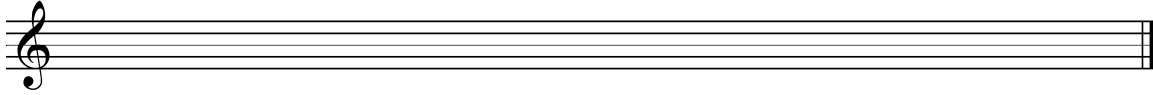
F Major (2)



D Major (2)

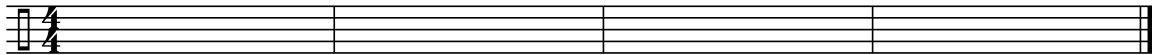
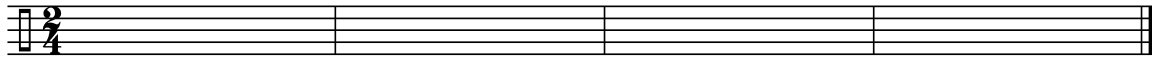


Bb Major (2)



5. Create a four measure rhythm in the following time signatures: (8)

- Use both rests and note values
- Include a dotted note or rest



6. Write under each measure the term that has the stated definition. (3)

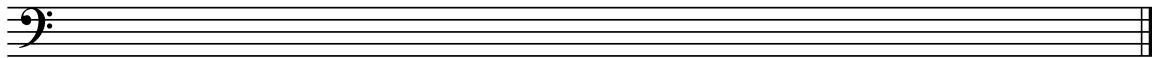


\*accelerating

\*gradually slowing  
down

\*return to  
previous tempo

7. Write the seven flats, in their correct order, on the staff below. (1)



8. Write the seven sharps, in their correct order, on the staff below. (1)



9. There are three B notes on the staff below. Explain how each is affected by the key signature and accidentals. (3)



1. \_\_\_\_\_
2. \_\_\_\_\_
3. \_\_\_\_\_

10. Match the following musical terms in the left-hand column with its meaning in the right-hand column. (4)

Slur	Gives a note extra emphasis
Accent	Joins two notes that are the same
Fermata	Play the note longer than full value
Tie	Joins two different notes

11. Complete the sentences by filling in the space with the appropriate music term. (3)

- a. A \_\_\_\_\_ tells us to slow down the tempo of the music.
- b. An F sharp with a \_\_\_\_\_ is joined to a C Sharp. You do not tongue.
- c. An \_\_\_\_\_ marking tells us the music should be played quick and lively.

12. Write a note that is enharmonic to the following (5):

- eg, Eb = D#
1. Gb = \_\_\_\_\_
2. A = \_\_\_\_\_
3. B = \_\_\_\_\_
4. Eb = \_\_\_\_\_
5. C# = \_\_\_\_\_

THIS PAGE INTENTIONALLY LEFT BLANK