

SECTION 2
PROFICIENCY LEVEL BASIC – THEORY ASSESSMENT VERSION B

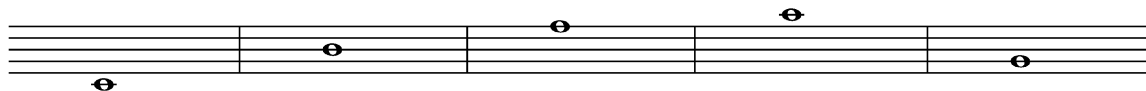
Cadet's Name: _____

Corps/Sqn: _____

Instrument: _____

Score: _____ / 40

1. Draw the treble clef and name the notes. (6)



2. Draw the bass clef and name the notes. (6)



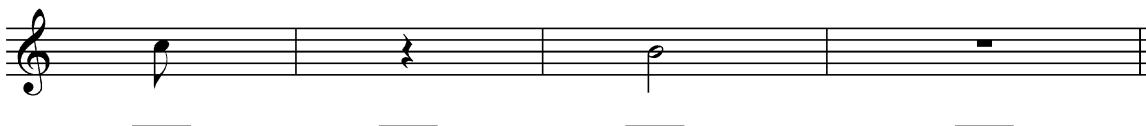
3. Show the strong and the weak beats using (S) for strong and (W) for weak. (8)



4. In $\frac{3}{4}$ time, what does the top number mean? (1)

5. In $\frac{3}{4}$ time, what does the bottom number mean? (1)

6. In $\frac{4}{4}$ time, how many beats do the following notes and rests receive? (4)



7. Give the symbol and define the following terms: (8)

- a. piano _____
- b. decrescendo _____
- c. fortissimo _____
- d. mezzo-forte _____

8. Complete Melody's story by filling in the blanks by using the musical excerpt that follow it. (6)
- Melody begins her musical journey at the first measure. When she arrives at the end of measure eight, she meets a _____ that sends her back to measure _____.
- When she arrives at measure twelve, Melody meets the symbol _____ that sends her back to measure _____. Melody continues her journey. Upon arriving at the end of measure four, she must immediately go to the _____ that is at measure _____.